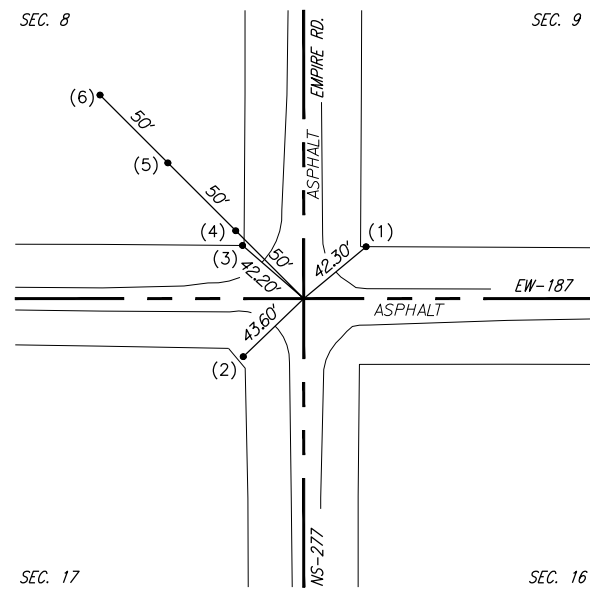
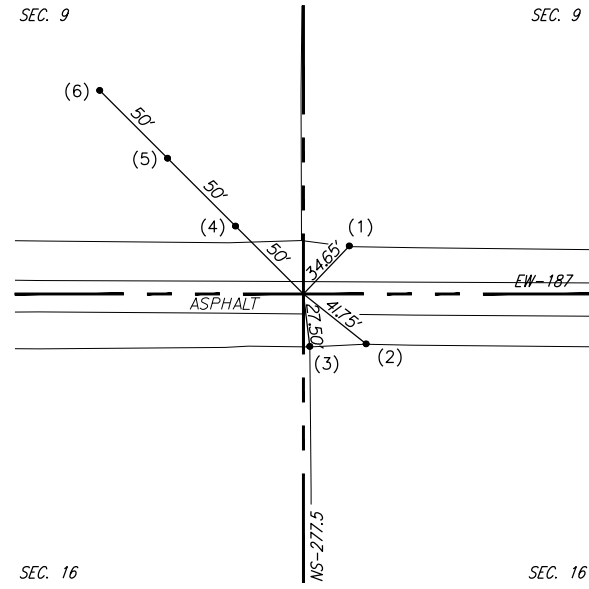


FED. ROAD DIST. NO.	PROJECT NO.	SHEET NO.	TOTAL SHEETS
6		18	



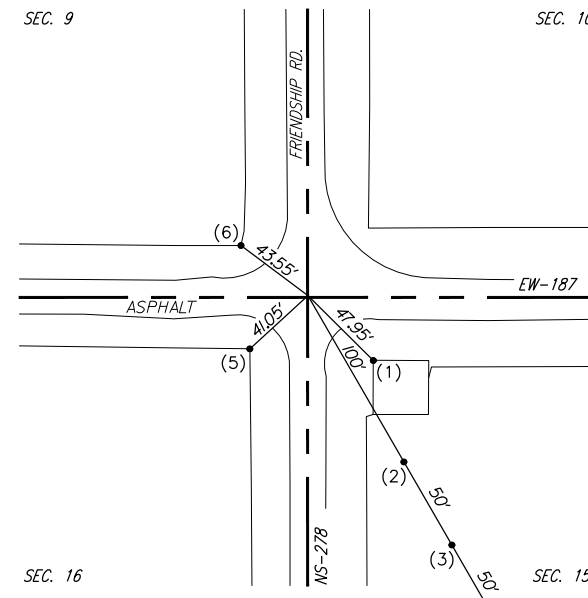
STA. 100+00.00
SW COR. SEC 9, T-3-S, R-8-W
FOUND 1IN IRON PIN 2IN DEEP

- 1) FOUND 50D NAIL SOUTH SIDE 6" WOOD CORNER POST N 50°11'32" E 42.30'
- 2) FOUND PK NAIL SOUTH SIDE POWER POLE S 46°08'46" W 43.60'
- 3) FOUND 50D NAIL SOUTHWEST SIDE RAILROAD TIE CORNER POST N 48°59'42" W 42.20'
- 4) SET 1/2" IRON PIN N 45°00'00" W 50.00'
- 5) SET 1/2" IRON PIN N 45°00'00" W 100.00'
- 6) SET 1/2" IRON PIN N 45°00'00" W 150.00'



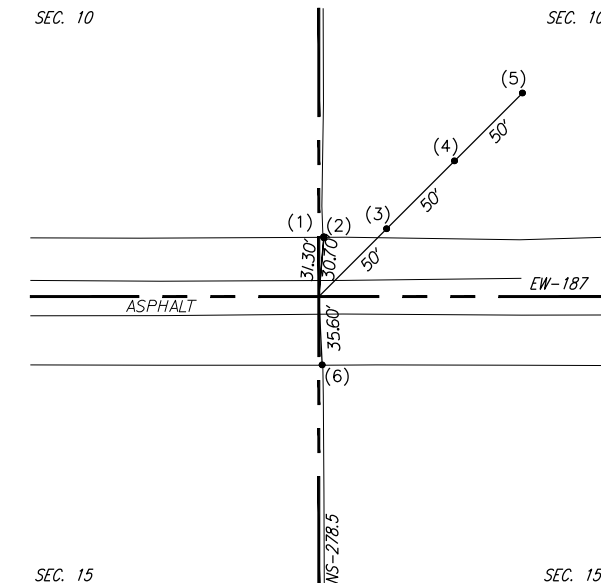
STA. 126+39.49
S QTR. COR. SEC 9, T-3-S, R-8-W
FOUND 1IN IRON PIN 4IN DEEP

- 1) SOUTHWEST FACE 3" STEEL GATE POST N 43°42'46" E 34.65'
- 2) RAIL ROAD SPIKE NORTH SIDE 8" WOOD GATE POST S 51°33'07" E 41.75'
- 3) NORTH FACE 3" STEEL CORNER POST S 07°00'53" E 27.50'
- 4) SET 1/2" IRON PIN N 45°00'00" W 50.00'
- 5) SET 1/2" IRON PIN N 45°00'00" W 100.00'
- 6) SET 1/2" IRON PIN N 45°00'00" W 150.00'



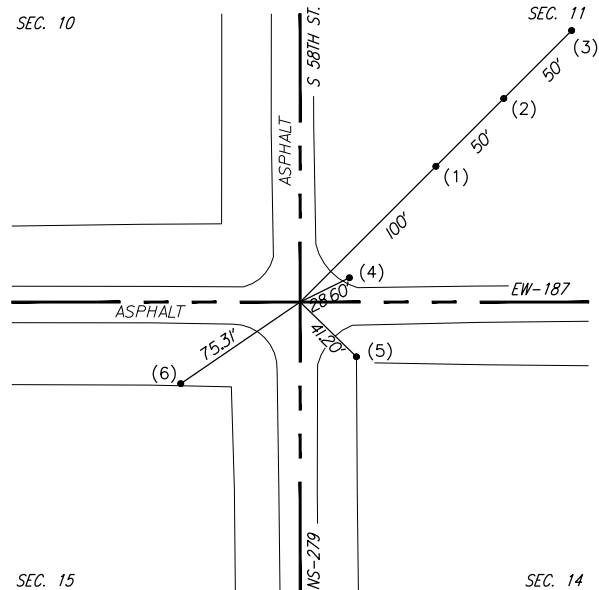
STA. 152+81.53
SE COR. SEC 9, T-3-S, R-8-W
FOUND 1IN IRON PIN 4IN DEEP

- 1) NORTHWEST FACE 3" GALVANIZED CORNER POST S 45°15'09" E 47.95'
- 2) SET 1/2" IRON PIN S 30°00'00" E 100.00'
- 3) SET 1/2" IRON PIN S 30°00'00" E 150.00'
- 4) SET 1/2" IRON PIN S 30°00'00" E 200.00'
- 5) NORTHEAST FACE 3" STEEL CORNER POST S 47°29'23" W 41.05'
- 6) SOUTHEAST FACE 3" STEEL CORNER POST N 53°11'03" W 43.55'



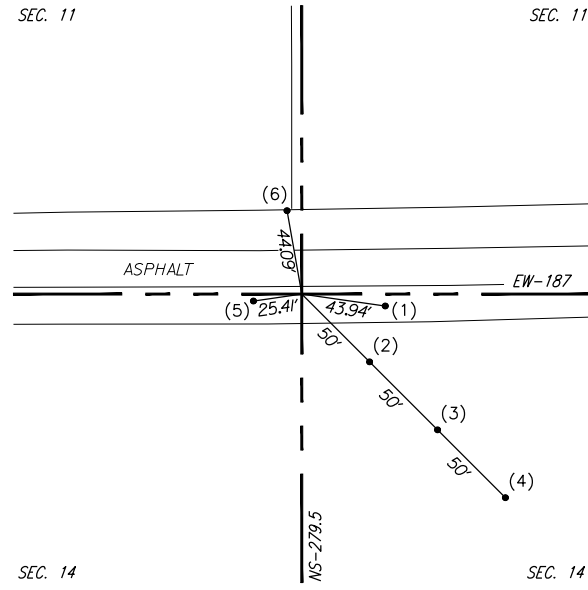
STA. 179+10.69
S QTR. COR. SEC 10, T-3-S, R-8-W
FOUND 1/2IN IRON PIN 4IN DEEP

- 1) SOUTH FACE 4" WOOD CORNER POST N 04°41'28" E 31.30'
- 2) FOUND 3/8" IRON PIN N 04°58'49" E 30.70'
- 3) SET 1/2" IRON PIN N 45°00'00" E 50.00'
- 4) SET 1/2" IRON PIN N 45°00'00" E 100.00'
- 5) SET 1/2" IRON PIN N 45°00'00" E 150.00'
- 6) NORTH FACE 8" STEEL CORNER POST S 02°49'58" E 35.60'



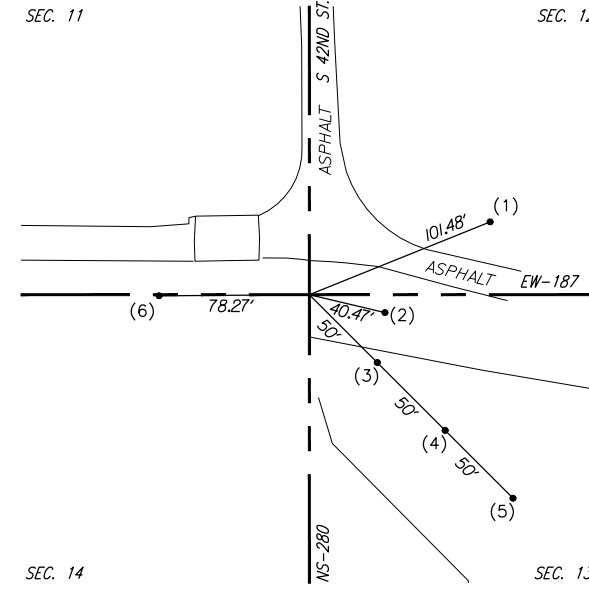
STA. 205+39.80
SE COR. SEC 10, T-3-S, R-8-W
FOUND 60D NAIL 4IN DEEP

- 1) SET 1/2" IRON PIN N 45°00'00" E 100.00'
- 2) SET 1/2" IRON PIN N 45°00'00" E 150.00'
- 3) SET 1/2" IRON PIN N 45°00'00" E 200.00'
- 4) FOUND BRASS CAP IN CONCRETE HEADWALL N 63°43'53" E 28.60'
- 5) NORTHWEST FACE 4" STEEL CORNER POST S 55°37'28" E 41.20'
- 6) SET 60D NAIL IN SOUTHEAST SIDE POWER POLE S 55°37'28" W 75.31'



STA. 231+80.79
S QTR. COR. SEC 11, T-3-S, R-8-W
FOUND 3/8" IRON PIN W/BRUNT LS 1407 CAP

- 1) FOUND 60D NAIL NORTHWEST SIDE 12" TREE S 81°52'07" E 43.94'
- 2) SET 1/2" IRON PIN S 45°00'00" E 50.00'
- 3) SET 1/2" IRON PIN S 45°00'00" E 100.00'
- 4) SET 1/2" IRON PIN S 45°00'00" E 150.00'
- 5) FOUND 60D NAIL NORTH SIDE 18" TREE S 81°46'11" W 25.41'
- 6) FOUND 60D NAIL EAST SIDE POWER POLE N 10°02'30" W 44.09'



STA. 257+25.14
SE COR. SEC 11, T-3-S, R-8-W
FOUND 3/8IN IRON PIN W/BRUNT LS1407 CAP

- 1) SET SOUTHWEST FACE GREEN U POST NATURAL GAS PIPELINE SIGN N 68°04'53" E 101.48'
- 2) SET WEST FACE WITH 5" STEEL BRACE POST S 76°38'01" E 40.47'
- 3) SET 1/2" IRON PIN S 45°00'00" E 50.00'
- 4) SET 1/2" IRON PIN S 45°00'00" E 100.00'
- 5) SET 1/2" IRON PIN S 45°00'00" E 150.00'
- 6) SET EAST FACE 2" STEEL GATE POST S 89°34'53" W 78.27'

EW-187 STEPHENS COUNTY

LANDTIES SHEET 1 OF 2

JOB PIECE NO. 27847(04) SHEET NO. R020